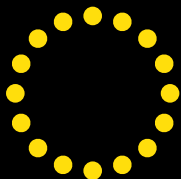


**SMART
YOUR
.BIKE**

DOTS.bike
User Manual



Sommario

Chapter 1: Getting to know your device

- What's in the box
- Specification
- Device overview
 - The Tracker
 - The LED on the Tracker
 - The LED on the Power-Light
 - The Power-Light rear light
 - Siren

Chapter 2: Setting up your device

- Set a code for the Combination Lock
- Tracker charging
- Removing and charging the Power-Light
- Inserting the Tracker and Power-Light
- Install your DOTS.bike

Chapter 3: Setting up your DOTS.bike App

- Setting Up
- Create a new account
- Login
- Forgot Password
- Pairing

Chapter 4: Recharging your DOTS.bike

Chapter 5: Using DOTS.bike App on your smartphone

- 5.1 Tab Bar
- 5.2 Home Section
 - 5.2.1 Automatic pairing with the smartphone
 - 5.2.2 Last Update
 - Missing Internet Connection
 - 5.2.3 Beeper
 - 5.2.4 Light
 - Auto Activation ON
 - Auto Activation OFF
 - Brake Light
 - Light Pattern
 - 5.2.5 Location
 - 5.2.6 Cycling Statistics
 - 5.2.7 Impact Detection
 - 5.2.8 Device warning
 - Device off
 - Service Inactive
 - 5.2.9 Event warning

- Impact detection
- Fallen bike
- Motion Detection
- 5.2.10 Battery
- 5.2.11 Power-Light Warning
 - Power- Light out of battery
 - Power- Light removed
- 5.3 Location Section
 - Find my Bike
- 5.4 Settings Section
 - Device info
 - Change your DOTS.bike picture
 - Change your DOTS.bike name
 - Bike Info
 - Notifications
 - Safe Zone
 - Impact Detection
 - Setting up the Impact Detection
 - Setting up the emergency timer
 - Adding a contact to the Impact Detection list
 - Removing a contact from the Impact Detection list
 - Light Settings
 - Changing the Light pattern
 - Combination Lock Code Memo
 - Setting the code
 - Motion Detection
 - My Profile
 - Changing Password
 - Help
- 5.5 Notifications

Chapter 1: Getting to know your device

DOTS.bike is securely attached to the bike seat post, and features an intelligent tail and brake light for safety when riding. DOTS.bike recognises you via Bluetooth, ensuring a safe ride with geolocation, impact detection and send SMS alerts to emergency contacts.

DOTS.bike combines several unique features:

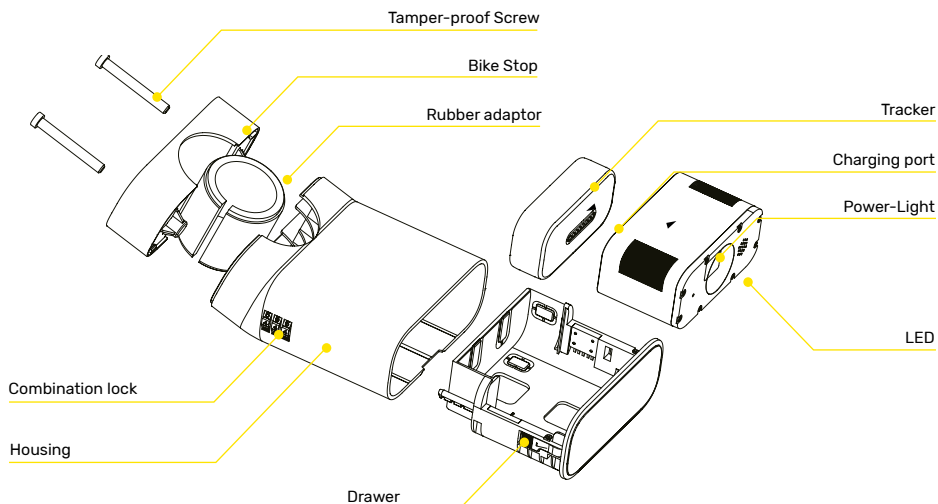
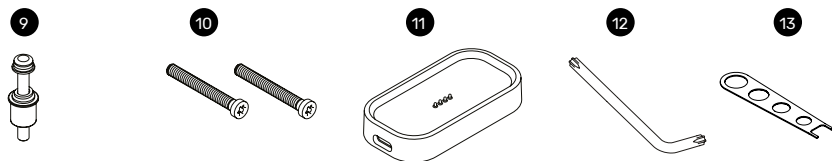
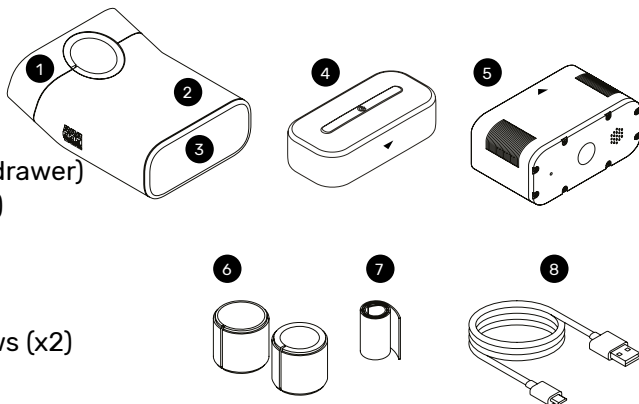
- easy to use by simply securing it to the seat post
- Bluetooth recognition
- geolocation
- intelligent tail and brake light for safety
- fallen bike detection
- impact detection and send alerts

Specifications

Product name	DOTS.bike
Dimension	106.6mm x 74.4mm x 44.1mm
Weight	240g
Connection	GSM/GPRS
2G	900/1800MHz
Bluetooth	BT 4.1
Chipset	MTK MT2503D
Memory	4MB ROM + 4MB RAM
Acoustic alarm	93 dB
Tracker Battery	450 mAh
Power-Light Battery	2000 mAh
Brake and Rear Light	56 lm, 17 cd
Light Beam Angle	125°

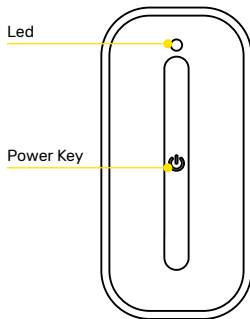
What's in the box

1. Bike Stop
2. Housing
3. Drawer
4. Tracker
5. Power-Light (inside drawer)
6. Rubber Adaptors (x2)
7. Rubber Band
8. USB type-C Cable
9. Tamper-proof Bolt
10. Tamper-proof Screws (x2)
11. Dock Charger
12. Allen Key
13. Combination Lock Tool



Device Overview

The Tracker



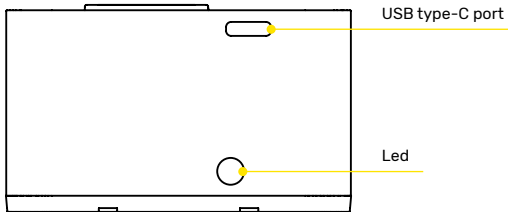
- **Power On**
Press the power key on the Tracker for 3 seconds to power on. The LED will display flashing blue for 7 seconds, then solid blue for 3 seconds
- **Power Off**
Press the power key on the Tracker for 3 seconds to power off. The LED will display solid red for 10 seconds
- **Wake up**
Press the power key on the Tracker for 1 second
- **Reset**
Press the power key on the Tracker for 15 seconds

The LED on the Tracker

- **LED off**
In Normal working mode / Sleep
- **Solid blue**
Flashing blue for 7 seconds then solid blue for 3 seconds when your DOTS.bike powers on
Solid blue for 2 seconds when your DOTS.bike wakes up
- **Flash blue**
Tracker is charging
- **Solid green**
Tracker Battery is fully charged
- **Solid red**
Solid red for 10 seconds when your DOTS.bike powers off
- **Flash red**
Battery level below 20%
- **Solid yellow**
No 2G signal

- **Flash yellow**
No GPS
- **Flash green**
Connection set-up and data transfer

The Power-Light



The LED on the Power-Light

- **Solid green**
The battery is fully charged
- **Solid red**
The device is charging

The brake and rear light of Power-Light

- **Flash red**
Flashes 0.5 seconds when your DOTS.bike pairs/reconnects/disconnects with your Smartphone
- **Solid red**
Your bike is decelerating

Beeper

Beeps for 0.5 seconds when your DOTS.bike pairs/reconnects/disconnects with your Smartphone.

DOTS.bike beeper will be automatically activated when Fallen Bike and Impact Detection event occurs.

Chapter 2: Setting up your device

Before starting to use your new DOTS.bike make sure to recharge the Power-Light and the Tracker for at least 3 hours.

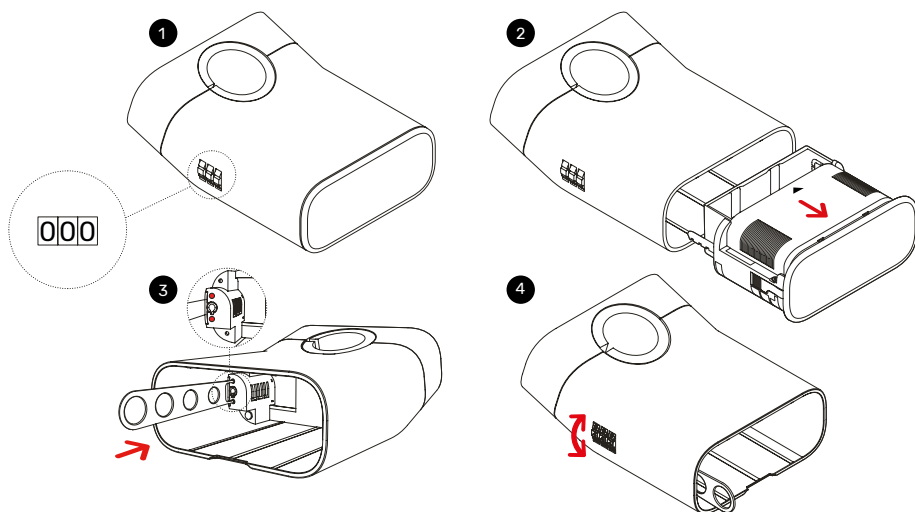
For subsequent uses it will be sufficient to recharge only the Power-Light and insert it correctly inside the Drawer [see “Recharging your DOTS.bike” pag 16].

For the safety of your bike and DOTS.bike, we recommend that you add the Anti-theft saddle bolt & nut and set a new password for the Combination Lock. (0-0-0 is the default combination).

Note: do not forget the code you set, as you need it to unlock the tool and change the code. Use the App to store your code whenever you set a new code [see “Combination Lock Code Memo” pag 30].

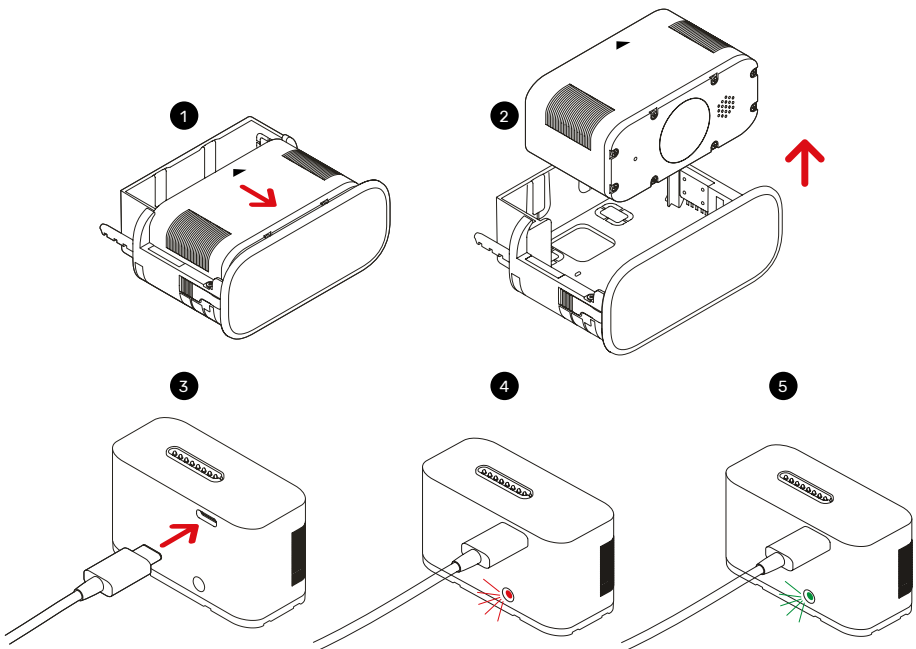
Setting a code for the Combination Lock

1. Make sure the code is set to default combination (0-0-0)
2. Extract the Drawer from the DOTS.bike by sliding it with your fingers
3. Use the Combination Lock Tool provided to press and hold the two holes on the lock inside the housing near the Combination Lock and turn the dial
4. Set a new code. Release the Combination Lock Tool. You have now set the new code.



Removing and charging the Power-Light

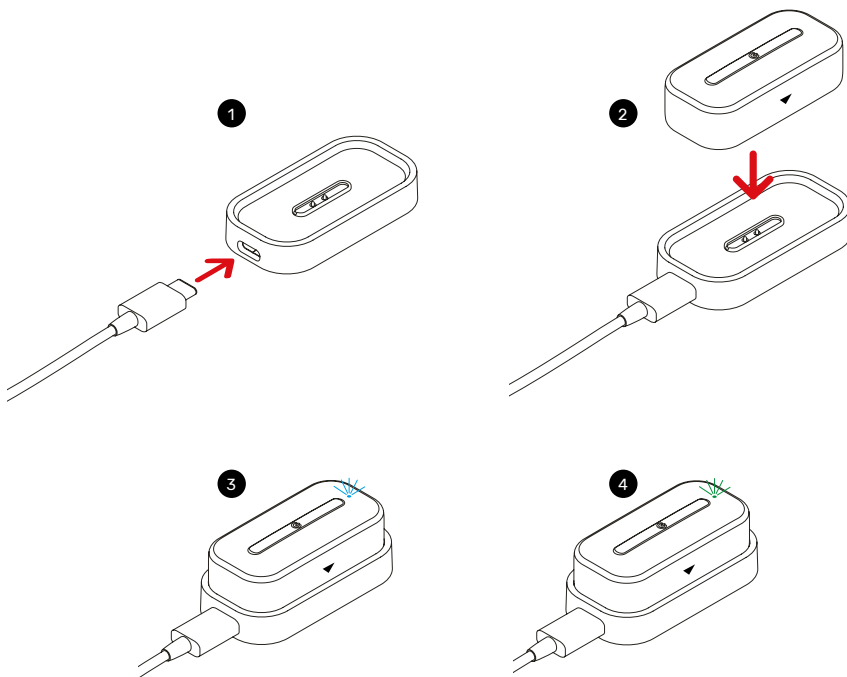
1. Shift the Power-Light towards the reflector to unlock it
2. Lift the Power-Light up to remove it
3. Connect the USB type-C cable to the Power-Light. Connect the USB type-C cable via USB to either a computer or USB power adapter to begin charging
4. You will know it is charging when the red LED on the Power-Light turns on. Full charge will require 3 hours
5. The Power-Light is fully charged when the LED colour changes to green.



Charging the Tracker

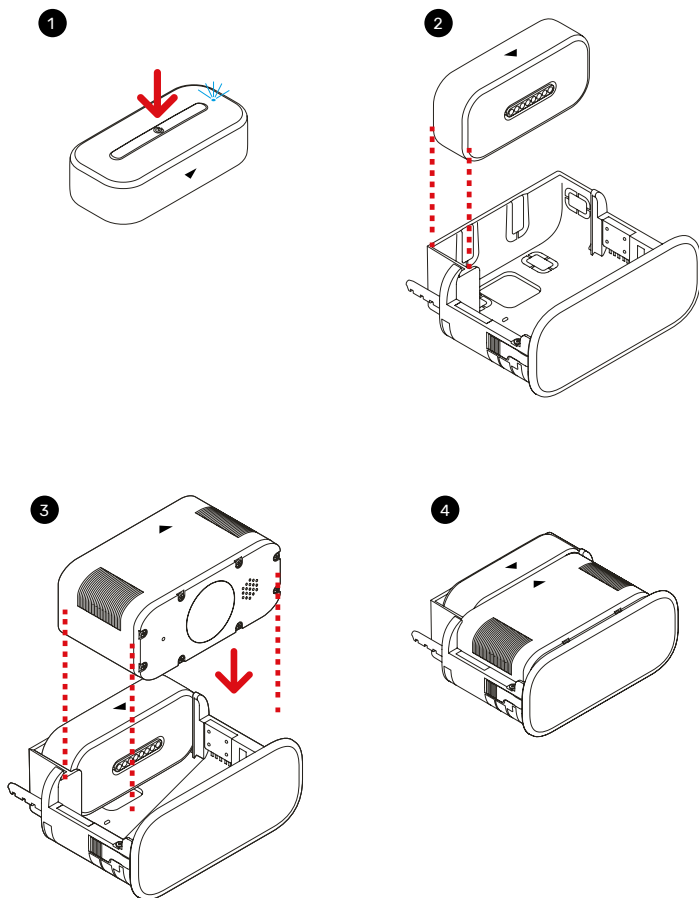
1. Connect the USB type-C cable to the Dock Charger
2. Place the tracker on the Dock Charger. Magnets will guide the insertion to the right position
3. Connect the USB type-C cable via USB to either a computer or USB power adapter to begin charging. Keep the charging pins clean for optimal performance. You will know it is charging when the blue LED on the Tracker lights up. Full charge will require 3 hours
4. The Tracker is fully charged when the LED colour changes to green.

NOTE: The Tracker automatically powers on after few seconds of charging



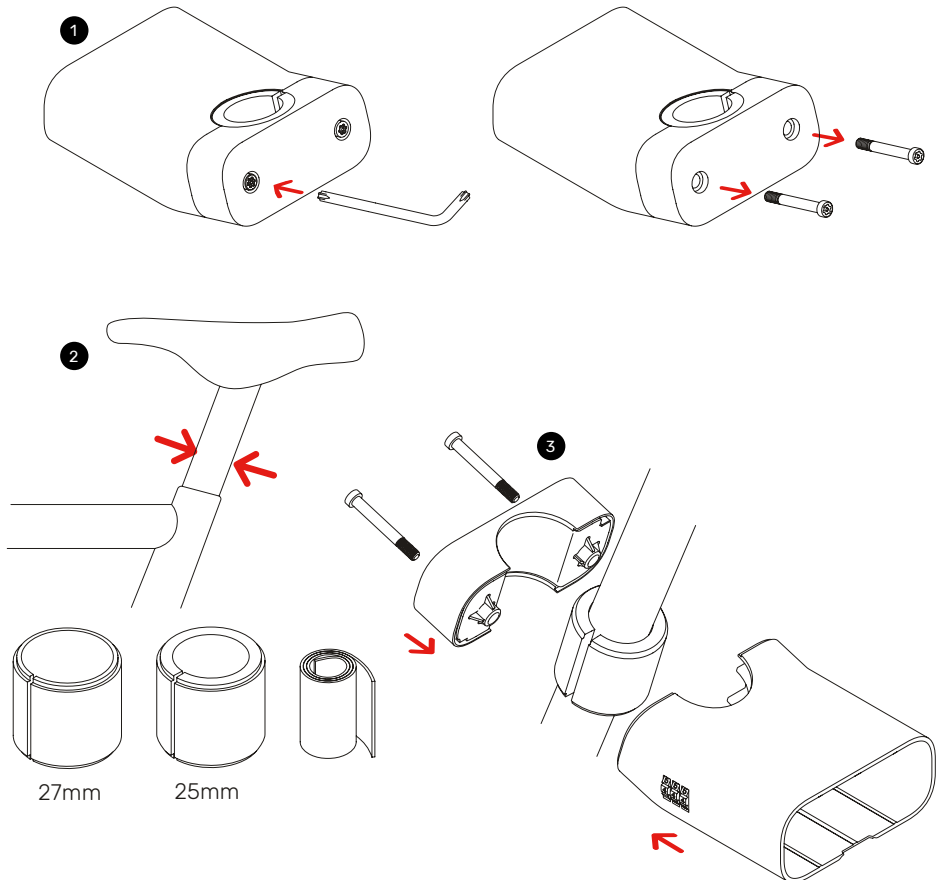
Inserting the Tracker and Power-Light

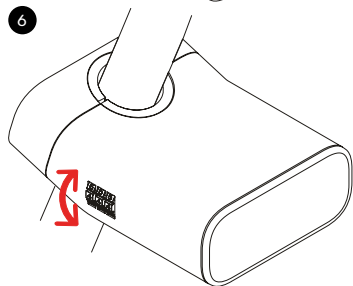
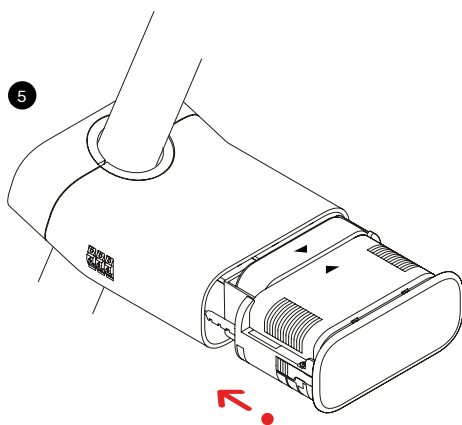
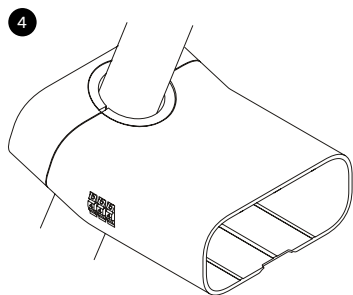
1. Ensure you have power on the Tracker before inserting it
2. Insert the Tracker powered on into the Drawer as illustrated, paying attention to the yellow arrow that must be visible on top and pointing to the reflector
3. Insert the Power-Light into the Drawer as illustrated, paying attention to the yellow arrow that must be visible on top and pointing to the Tracker
4. Once the Tracker and the Power-Light are in position the two yellow arrows should be facing each other.



Install your DOTS.bike

1. Using the provided Allen Key, remove the Tamper-proof Screws from the back of the DOTS.bike
2. In order to secure your DOTS.bike to your bike, you will need to select the right spacer for your seat-tube. You can choose a rubber spacer with diameter 25 mm or 27 mm, or a rubber band for adjustable custom size. You can cut the band with scissors according to your convenience
3. Place the right adaptor or use the band on your seat-tube
4. Reassemble your DOTS.bike with the aid of the provided Allen key
5. Insert the Drawer in the DOTS.bike and push it until it is firmly closed. Make sure the Drawer is well closed until you hear a 'clit'
6. Mix up the numbers on the lock so your personal code can no longer be seen and then your DOTS.bike is secure.





Chapter 3: Setting up your DOTS.bike App

Setting up

1. Download V by Vodafone app from the app stores
2. Activate your V-Bike Smart plan in the V by Vodafone app by scanning the QR code on the box or on the tracker
3. Make sure to charge tracker and Power-Light for at least 3 hours
4. Download DOTS.bike App (search DOTS.bike in Google Play or Apple Store)
5. Make sure the tracker is switched on
6. You are ready to activate your device

Creating a new account

1. Touch “New user? Sign up here!” to create your DOTS.bike account
2. Enter your e-mail address and set a password for your account
3. Your password should have at least 8 digits, 1 uppercase, 1 number, 1 special digit
4. Make sure to read our “Terms and Conditions” and “Privacy Policy” clicking the links
5. Touch “Register”
6. You will receive a system e-mail from the server.
7. Open the e-mail from your Smartphone. Touch “Confirm” to complete the registration

Note: if you cannot find the confirmation e-mail, repeat the process and be sure to use the right e-mail address, or check your spam folder. If you need help, write to us at: contact@connectlab.co

Login

1. Touch “Log in” on the welcome page
2. Enter your e-mail and password
3. Touch “Log in”

Forgot Password

1. Touch “Log in” on the welcome page
2. Touch “Forgot Password”
3. Insert your e-mail address
4. Touch “Send e-mail” to receive a system e-mail from the server to reset your password
5. Open the e-mail from the same smartphone you requested the new password and validate the address
6. Go back to DOTS.bike App

Pairing

Ensure your DOTS.bike Tracker is power on

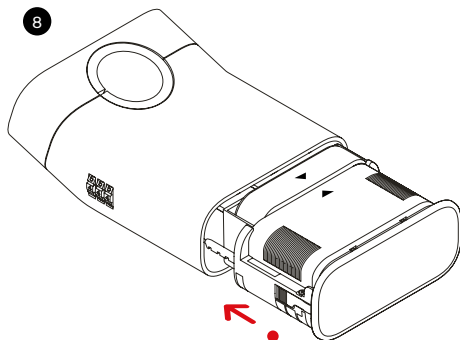
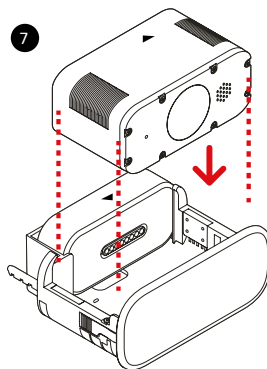
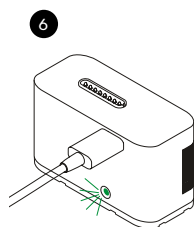
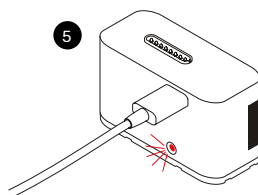
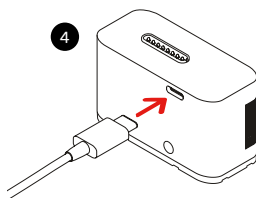
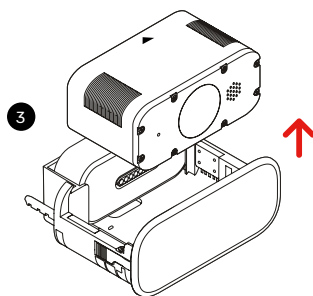
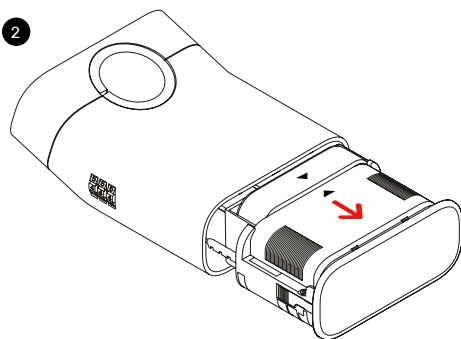
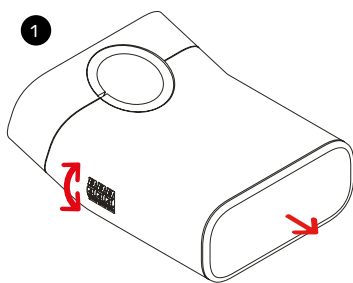
1. Turn on Bluetooth on your Smartphone
2. Return to the DOTS.bike app, press the BT yellow icon to connect your DOTS.bike
3. Choose a name for your DOTS.bike
4. Press Start!

Chapter 4: Recharging your DOTS.bike

Your DOTS.bike has two batteries, one inside the Tracker and one inside the Power-Light. From the DOTS.bike App you are able to check the total battery level. When it is time to recharge your DOTS.bike, only remove the Power-Light and keep the tracker with the bike. This let you track your bike even when you are recharging the Power-Light. Once put back in place, the Power-Light will recharge the Tracker.

1. Use your code in the Combination Lock to unlock and extract the Drawer from the DOTS.bike by sliding it with your fingers
2. Shift the Power-Light towards the reflector to unlock it
3. Lift the Power-Light up to remove it.
4. Connect the USB type-C cable to the Power-light. Connect the USB type-C cable via USB to either a computer or USB power adapter to begin charging. While the Power-Light is charging, you can use the DOTS.bike with the Tracker to track your bike and identify impacts
5. You will know it is charging when the red LED on the Power-Light turns on. Full charge will require 3 hours
6. The Power-Light is fully charged when the LED colour changes to green
7. Insert the Power-Light into the Drawer as illustrated, paying attention to the yellow arrow that must be visible on top and pointing to the Tracker
8. Once the Tracker and the Power-Light are in position the two yellow arrows should be facing each other. Insert the Drawer in the DOTS.bike and push it until it is firmly closed. Make sure the Drawer is well closed until you hear a 'clac'

Note: it is possible to recharge the Tracker trough the Power-Light. The tracker must be charged only on the first use.



Chapter 5: Using DOTS.bike app on your Smartphone

5.1 Tab bar

This bar helps you navigate faster within the application. You can easily switch to **Home**, **Location** and **Settings** touching the icons on the Tab bar. Icons will be yellow according to the section displayed.



Home icon



Location icon



Setting icon

5.2 Home section



This section displays your DOTS.bike status.



This is the default DOTS.bike picture, see page 28 to know how to change it. Once the Bluetooth connection with your Smartphone is established, battery and light status information will be updated. While this is happening your DOTS.bike picture will be blinking.

5.2.1 Automatic pairing with the Smartphone



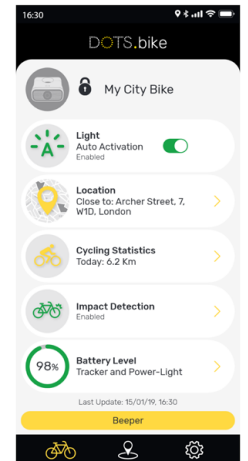
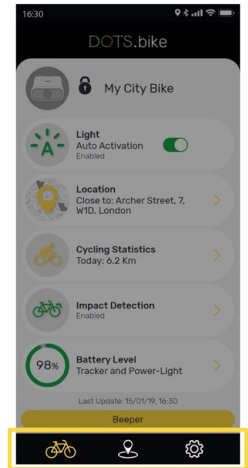
When you are near your DOTS.bike the motion detection is disabled allowing you to freely use the bike.



When you move away from your DOTS.bike the Motion Detection is activated.

In the event of unauthorized movement of the bike, the siren and lights of your DOTS.bike will activate for 1 minute and you will be notified via an instant notification on your smartphone.

This setting is automatically managed by the app, and can be deactivated from the Settings menu (for more details see page 30)



5.2.2 Last Update

View date and time of the last information update (Location, Battery power, Settings).

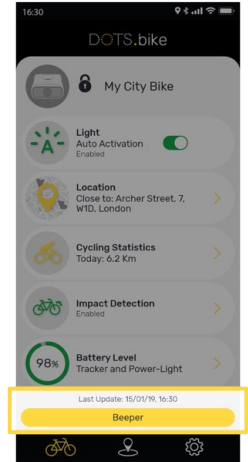
Normal update frequency is 3 minutes during cycling. When your bike is parked its position will not be automatically updated until it is moved again.

Missing Internet connection

If there is no Internet coverage or if "Airplane mode" is activated, a flashing red warning will appear. In this case, the data displayed refer to the last update performed.

5.2.3 Beeper

Touch the button to turn on the beeper to easily find your bike in a parking lot.



5.2.4 Light

This area is dedicated to the status of DOTS.bike light.

Auto Activation ON

In Auto Activation ON, light will automatically turn ON while you are cycling and turn OFF after 30 seconds you stop cycling.

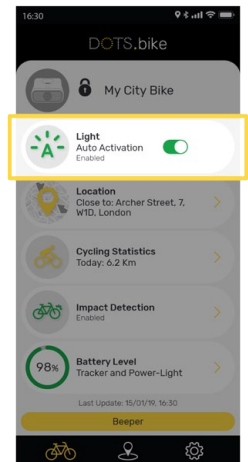
Auto Activation icon

Auto Activation OFF

In Auto Activation OFF you can switch ON and OFF the light by touching the light box. Icon will change according to the status.

Light ON icon

Light OFF icon



When your Smartphone will Bluetooth disconnect from DOTS.bike the light will go OFF.

By default the Auto Activation is OFF, to change Auto Activation setting see Light Settings at pag 30.

Brake Light

DOTS.bike has a built-in accelerometer, which detects when the bike is moving and triggers the light to automatically illuminate. It also recognises when movement stops and switches the light off.

The accelerometer also detects quick decelerations and the light becomes temporarily brighter to alert other road users that the cyclist is slowing (like a brake light).

However, the accelerometer and “brake light” is not connected to the bike’s mechanical brake and is based on deceleration detection only. It will only work in cases of rapid deceleration. As a result, the “brake light” may show when riding on uneven roads or paths and when the slope of the road is changing.

When DOTS.bike detects a deceleration the brake light will automatically be solid red for 3 seconds.

Light Pattern

You have three light mode: Flashing, Mix and Constant. By default light mode is set to flashing.

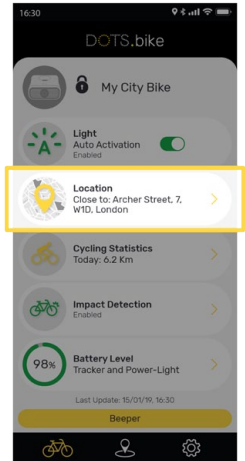
To change your light mode go to Light Settings and select your preferred pattern by sliding the pointer. Mix and Constant will increase battery consumption. See Light Settings at pag 30.



5.2.5 Location

This area is dedicated to present you with the last location of your bike.

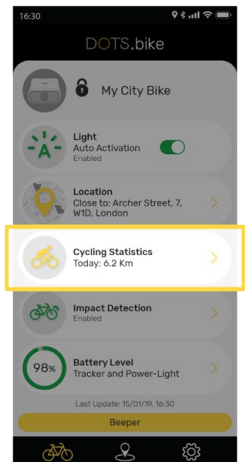
Touch the box to go to the map and request an updated location. See Locate bike Section at pag 27.



5.2.6 Cycling Statistics

This section displays today's cycling time and distance. Touch to access the Cycling Statistics pages, and go to Day, Week, or Month to see the distance travelled in a day, week or month. Scroll to the left or to the right to select the date or period.

On the Day page, go to Show Map to see your day's movements on the map.



5.2.7 Impact Detection

This area is dedicated to the Impact Detection Mode.

DOTS.bike has a built-in accelerometer, which detects most falls that involve a strong impact followed by a motionless state for 5 seconds. If movement is detected during this period, the automatic impact detection alert will not be triggered.

The fall detection technology has been tested against simulated falls, however, there might be some instances where real falls differ from the simulations and are therefore not detected.

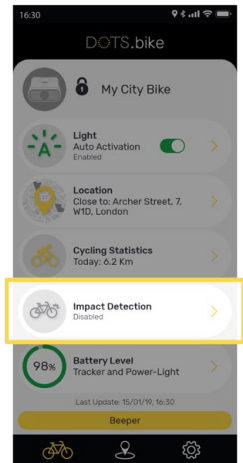
False alarms might also occur when the accelerometer is recording events that have a similar pattern to a falling motion. If this happens, the impact detection alert can be easily cancelled on the DOTS.bike app, before notifications are sent to contacts.

Impact Detection default setting is OFF. To activate this feature, at least one emergency contact must be set.

When Impact Detection is ON, your DOTS.bike will go to Emergency mode in case of impact and will send an SMS to your pre-set contacts (up to 5 contacts) after the pre-set timing (default value is 2 minutes). See “Adding a contact to the Impact Detection list” at pag. 28

Your emergency contacts will receive a text message saying: “V-Bike SOS, help may be needed at this location”, followed by a link to view the impact location (GPS coordinates). DOTS.bike will also activate sound and light alerts.

See page 28 to know how to properly set this feature.



The green icon indicates that Impact Detection is ON



The grey icon indicates that Impact Detection is OFF



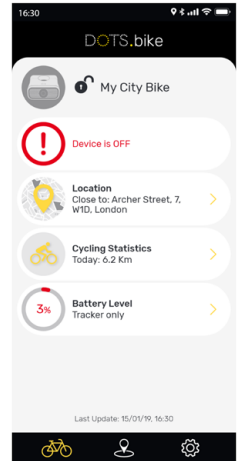
The grey icon with alert indicates that Impact Detection is OFF and there are no emergency contacts

5.2.8 Device Warning

Device OFF

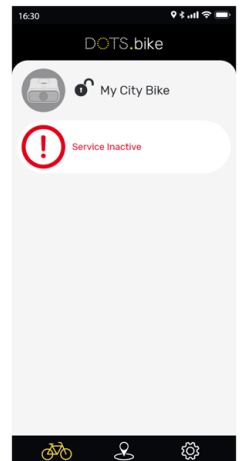
In case you switch off the tracker you will see a red warning on the App and all functions will be disabled. To restore the functionality switch on the tracker by pressing the key.

When the tracker runs out of battery it will shut down automatically and all functions will be disabled. To restore the functionality insert the Power-Light fully charged.



Service Inactive

This is a warning alert that there is a problem with your V-Bike Smart subscription. Go to the V by Vodafone App to get more information.



5.2.9 Event Warning

Impact Detection

In case of impact detection your DOTS.bike will go to Emergency mode and the home screen will display an alert.

You can touch the red area to activate sound and light and send SMS alert or the green button to dismiss all actions.

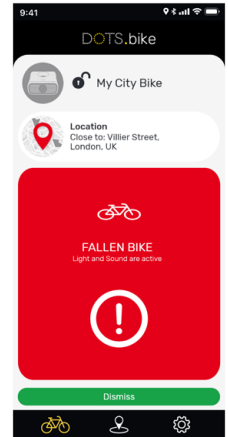
In case on no action DOTS.bike will automatically activate sound and light and send SMS alert to emergency contacts according to the pre-set emergency timer.



Fallen Bike

In case of fallen bike your DOTS.bike will go into emergency mode and instantly activate the siren and lights for a minute and the home screen will show an alarm

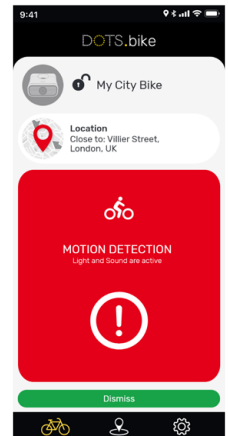
You can touch the green button to dismiss all actions.



Motion Detection

If it detects an attempted tampering or unauthorized movement, DOTS.bike will go into Emergency mode by instantly activating the siren and lights for 1 minute and the Home screen will show an alarm.

You can touch the green button to turn off the siren and lights.



5.2.10 Battery

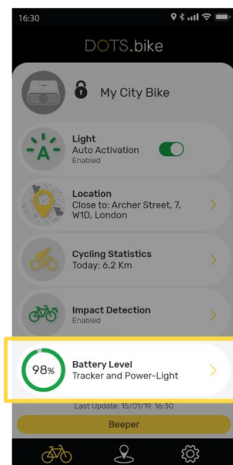
This area is dedicated to the battery level of your DOTS.bike.



In normal status, when Power-Light is inside the drawer, the Battery area shows the DOTS.bike battery level considering both the Tracker and Power-Light

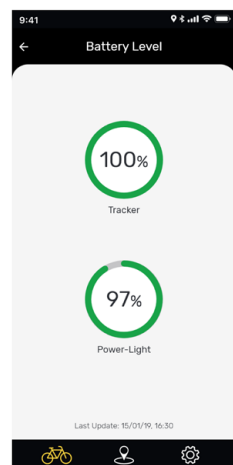


When the total battery level is below 25%, the icon will turn red and you will receive the first "Low Battery" notification. Please charge your Power-Light in time to avoid to use the Tracker battery.



Info Battery

Touch the light box to check the battery status of Tracker and Power-Light. The top section indicates the Tracker battery, and the bottom one the Power-Light battery.



5.2.11 Power-Light Warning

Power-Light out of battery

In the case the Power-Light is fully discharged, you will see on the Home screen the Alert: “Power- Light not found or out of battery. Beeper and Light are not active”.



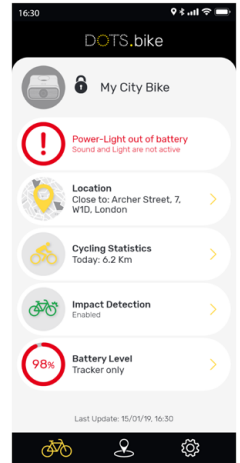
The Battery icon will show in red the percentage of remaining battery life of Tracker only.

Please be aware that in this case neither the rear light, the brake light nor the beeper will work.



When the percentage will go below 25% the percentage number will start blinking.

Please charge immediately your Power-Light and place it back into the drawer to recharge the Tracker to avoid its forced shut down when the Tracker battery will be fully discharged.

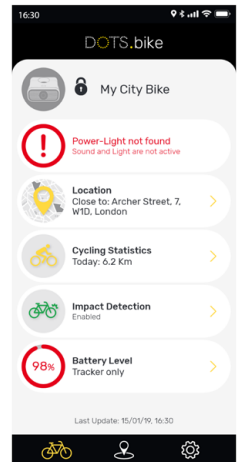


Power-Light removed

If you have removed the Power-Light from the drawer, you will see a warning “Power-Light not found or out of battery. Beeper and Light are not active”.

Please be aware that in this case neither the rear light, the brake light nor beeper will work.

If the Power-Light is in the drawer but you still see this alert, make sure that the two yellow arrows are pointing at each other, that the Power-Light is charged and the drawer is properly closed with final click.





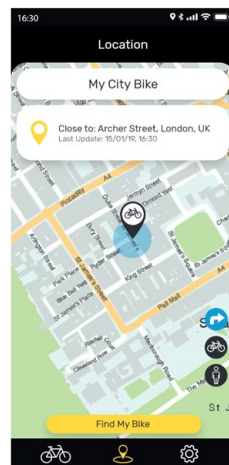
5.3 Location section

In this section you will see your bike location presented on the map. The Location is displayed with date and time of the last known position.

The blue circle indicates the area where your bike is located.

You can pinch the map to zoom and you can use one finger to pan/drag the map. Additionally, you can use two fingers to swipe up to view the map at an angle. This gives you a flyover view (with 3D buildings) of the section of the map you're viewing.

Location accuracy depends on the available technology. If your bike is indoor, GPS location cannot be used. A wider blue circle will be presented as the location accuracy will be lower.



Click the bike icon to centre the map on your DOTS.bike



Click the user icon to centre the map on your own position



Click the blue arrow icon to open Maps or Google Maps to show how to reach your bike.



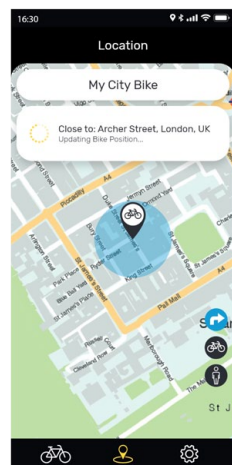
If you have set a Safe Zone (see page 30), it will appear as a green area on the map. When the bicycle is in a green area, all alarms are automatically switched off and the bicycle's position is indicated by a green pin on the Homepage.

Find my Bike

Touch the **"Find my Bike"** button to manually refresh your bike's location.

While searching for the bike's location, a blue circle will indicate the approximate location around the blinking bike pin.

This is the updated bike location.



NOTE: If your bike is indoor, GPS location cannot be used so a lower approximation will be displayed.

NOTE: If the location cannot be updated an error message will be displayed. In this case retry.



5.4 Setting section

In this section you can customise DOTS.bike according to your preferences.

Device info

On this page, you can find the following: your DOTS.bike picture, DOTS.bike name, Sim Status, Firmware version, App version and IMEI Number

Change your DOTS.bike picture

1. Go to Settings -> Device Info
2. Touch the Camera Icon on the bottom left of your profile picture
3. Choose a picture from your Smartphone gallery

Change your DOTS.bike name

1. Go to Settings -> Device Info
2. Change the name
3. Save

Bike info

On this page, you can insert your bike's basic information, including: VIN (Vehicle Identification Number), Brand, Model, Colour, Purchase date.

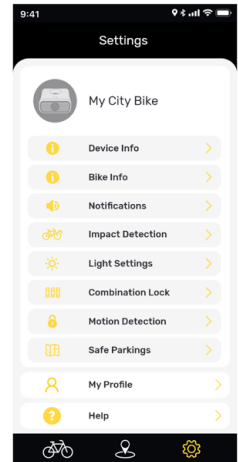
Notifications

You can enable/disable your notifications by touching the switch button.

- **Low Battery Alert:** DOTS.bike total battery power is less than 25% , 10%,2% of the full capacity. Default is ON
- **Fallen Bike Alert:** when your bicycle has fallen down. Default is ON

Safe Zone

You can set areas called Safe Zones for places you often visit by bicycle (e.g., home, office, etc.). Once the



safe zone has been set, DOTS.bike will often check your bicycle's position (in areas with satellite signal and Vodafone network coverage). You will receive a notification if your bicycle leaves the specified area. Please note that these are not instant notifications.

Setting up a Safe Zone

1. Go to Settings -> Safe Zone -> Touch the Add New Safe Zone icon
2. Scroll with your finger to set the radius of your Safe Zone and enter the name
3. Touch "Done"

Deleting a Safe Zone

1. Go to Settings -> Safe Zone
2. Select the Safe Zone you want to delete
3. Touch "Remove Safe Zone"

Impact Detection

You can set up your DOTS.bike Impact detection ON and OFF, set up Emergency Timer and add contacts.

Setting up the Impact Detection

1. Go to Settings -> Impact Detection
2. Touch the switch to enable/disable Impact Detection.

Setting up the Emergency Timer

1. Go to Settings -> Impact Detection
2. Set a duration for the emergency timer. The timer starts as soon an Impact is detected and once it reaches zero the Help Alerts SMS are sent to the defined emergency contacts. The default value is 2 minutes, it is possible to choose 0 (immediate alert), 2 minutes or 5 minutes.
3. Save

Adding a contact to the Impact Detection list

1. Access Settings -> Impact Detection
2. Touch the "Add from Contacts" icon to add a contact that is already present on your Smartphone. Otherwise touch the "New contact" icon and manually enter the name and mobile phone number.
3. Save

Removing a contact from the Impact Detection list

Go to Settings -> Impact Detection

1. Touch the bin icon of the contact you want to remove
2. Touch "Remove" button in the pop-up to confirm, or "Back" to cancel

Light Settings

You can set up the pattern mode.

Changing the Light pattern

1. Go to Settings -> Light
2. Select the preferred pattern by sliding the pointer to Flash, Mix or Constant.
3. Save

NOTE: Mix and Constant will increase battery consumption.

Combination Lock Code Memo

Combination Lock helps you to record the 3 digit code needed to open the drawer. Once you have changed the code on DOTS.bike (the default combination is 0,0,0), save the new code on your App.

Setting the code

1. Go to Settings -> Combination Lock Code Memo
2. Update the Code by scrolling the numbers
3. Save

Motion Detection

ACTIVE. Alarms are automatically activated when you move away from the bicycle.

INACTIVE. All alarms are always disabled.

Profile

In this section you can customise your profile (name, surname, e-mail, password and telephone number) and preferences.

After modifying your Profile press "Save" to confirm the changes.

Changing Password

1. Go to Setting -> Profile
2. Touch "Change Password"
3. Enter your current Password
4. Enter your New Password. It should have 8 digits, at least 1 upper case, 1 lowercase, 1 number and 1 special character
5. Touch "Save" to confirm
6. "Data successfully saved" pop-up message will confirm the change

Help

In this section you can find general information such as FAQs, Privacy Policy, Terms and Conditions, User Manual, General Information, What's new and Demo Video.

5.5 Notifications

You will receive a notification when the following events will be triggered:

- **Impact Detection**

You will receive a notification stating "Impact Detected. Confirm you are safe."

- **Fallen Bike**

You will receive a notification stating: "Motion Detection. Make sure everything is OK".

- **Motion Detection**

You will receive a notification stating: "Motion Detection. Make sure everything is OK".

- **Low Battery** when the total battery (Tracker and Power-Light) level is below 25%, 10% and 2%.
- **Low Tracker Battery** when the tracker battery level is below 25%, 10%
- **Power OFF** when the tracker is switched off

In case of **Impact Detection** notification, you can tap "ALARM" on the notification to immediately activate sound and light. Otherwise you can touch "DISMISS" to ignore it.

In of **Fallen Bike** and **Motion Detection** notifications and motion detection, you can tap the notification to open the DOTS.bike app, check the DOTS.bike and in the event of a false alarm, interrupt the siren and the light by clicking on "DEACTIVATE".

In case of **Low Battery** and **Power OFF** notification, you can touch the notification to open DOTS.bike App where you can check your DOTS.bike and find out more about it.



DOTS.bike

ConnectLab srl, Viale Coni Zugna 71, 20144 Milano, Italia

www.dots.bike